



Ballard Diving and Salvage

www.ballarddiving.com

1525 NW Ballard Way Seattle, WA 98107

VOICE 206-782-6750 FAX 206-782-8944 EMAIL info@ballarddivers.com

Systems

Design and Consultation

Hydro-Project Specific
Tooling Packages

Hydraulic Blanking/Plugging

General Construction Tooling
Packages

Remote Hydraulic Dredging

Remote Resurfacing and
Machining Technologies

High Pressure Water Blasting

Sector Scan Sonar

Dual Imaging Sonar

Side Scan Sonar

Light ROV's

HD ROV's

Long Tunnel ROV's - 8000ft

Ground Penetrating Radar

Multi Node Security System
(for hydro, utility and
municipal facility security)

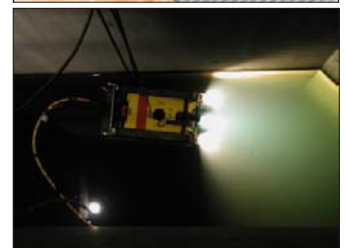
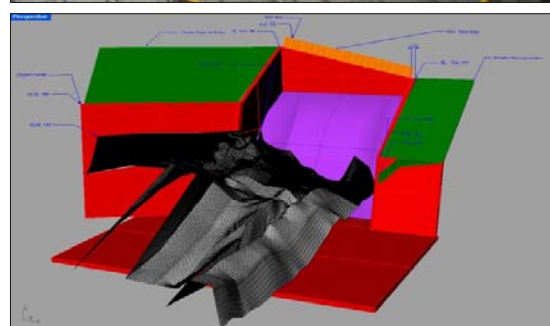
CAD, Layover Dimensioning

Remotely Operated Vehicles (ROV's) & Sonar Construction, Inspection and Specialized Tooling

BDS is dedicated to offering their government, industrial, municipal and engineering customers a full array of remote underwater construction, inspection and tooling services. We have worked hard to develop and bring to the work the most comprehensive package of construction services and tooling arrangements available to the inland and coastal marine industries.

We realize that many underwater projects are more safely and economically performed by utilizing ROV's. At BDS we strive to limit diver exposure to underwater operations on hydroelectric projects and other sub-aqueous facilities where head pressure differential and active equipment issues make manned operations more sensitive. However, talking about limiting diver exposure only helps if a company can offer safe, efficient and effective alternate solutions for performing operations with ROV's that have typically been conducted using divers.

That's where BDS comes in. We have the knowledge, experience and track record to make your project safer and more successful.



VISIT US ON THE WEB AT: www.ballarddiving.com