



Ballard Diving and Salvage

www.ballarddiving.com

1525 NW Ballard Way Seattle, WA 98107

VOICE 206-782-6750 FAX 206-782-8944 EMAIL info@ballarddivers.com

Underwater Services

Pipeline and tunnel construction

Internal and external joint repairs

Diver and Remotely Operated Vehicle long tunnel and pipe penetrations

Installation and pressure testing of mechanical joints

Pipeline and outfall diffuser ports and hot taps

Repair or replace damaged pipe sections

Removal of internal debris and sediment

Installation and repair of submarine cables

Underwater concrete placement and demolition

Installation and repair of sacrificial anodes

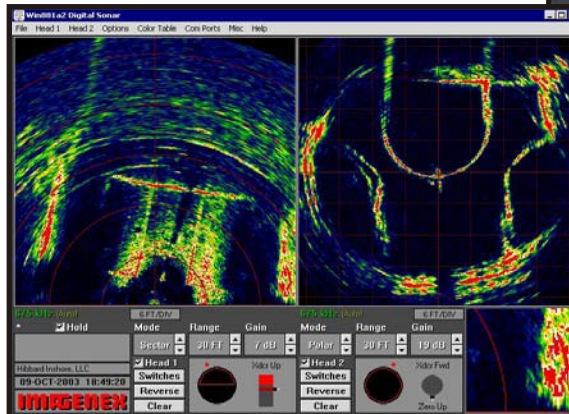
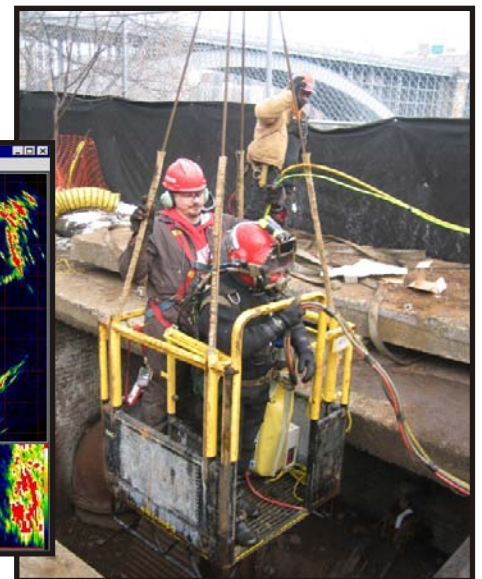
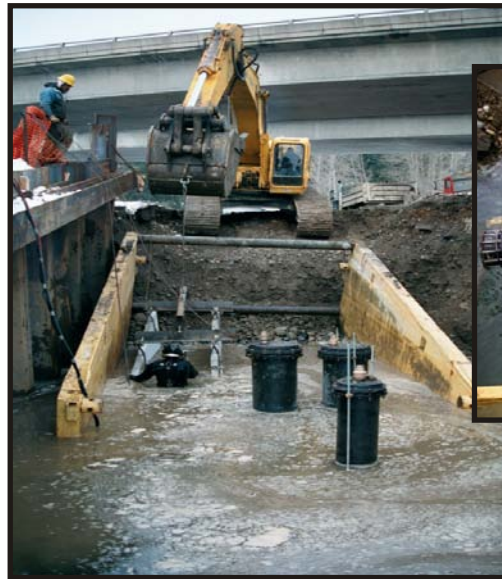
Anchoring of existing pipelines

Pipeline pigging/blanking

Pipelines, Tunnels, Outfalls...

Pipelines, tunnels, siphons, intakes, outfalls and associated structures are routinely constructed, maintained and repaired by BDS. Our experience in the construction phases of these structures allows us to provide our customers with valuable planning data, assessments of the condition of their facilities, and cost effective construction, inspection and repair solutions designed to meet their individual needs. Often times our projects are performed in less than desirable conditions - turbid or black water, severe tidal or river currents, below freezing temperatures, etc.

We are well known for our expertise in aggressively managing underwater construction projects with demanding schedules and complex components with a proven track record of safe, efficient and innovative underwater services.



Visit us on the web at: www.ballarddiving.com